

BREAST IMAGING CLERICAL ASSISTANT

Candidate Pack



Colleague Benefits

General

- 27 days annual leave entitlement, increasing with length of service, plus 8 bank holidays
- Flexible working policies
- Generous maternity pay and 2 weeks full pay paternity leave
- Colleague recognition scheme and long service awards
- Greener travel initiative, including cycle to work scheme and lift share
- Childcare information and support available, including onsite nurseries
- Discounted bus passes with Arriva

Financial

- Access to various local and national discounts via various external websites
- Salary sacrifice schemes
- Generous pension scheme
- Access to a financial support booklet
- Pre-retirement courses
- Free Will writing service
- Savings and Loan schemes

Learning and Development

- Coaching and Mentoring
- Leadership Academy – leadership and management training for all staff
- Access to E-Learning courses
- Apprenticeships – growing number of apprenticeship opportunities across all disciplines
- Secondment and acting up opportunities
- Support to complete qualifications whilst on the job

Wellbeing

- Coaching
- Mental Health First Aiders
- Chaplaincy
- Fast track physiotherapy service
- Free eye test vouchers
- Slimming World referral scheme
- Cervical screening service
- Long Covid support
- Access to wellbeing/rest rooms
- Menopause support
- Men's Health forms and MOT
- Discounts with local gyms



Poppy's Promise

Poppy's Promise is a compassionate care initiative introduced within this Trust to enhance communication, respect and empathy across every aspect of patient care.

The initiative was founded by Katie Russell, following the loss of her daughter Poppy, who tragically died at just twelve hours old due to failures in care and communication. Born from that experience, Poppy's Promise serves as a powerful reminder that while clinical skill saves lives, it is compassion, listening and respect that define the quality of care and human connection. By embedding this promise across our organisation, we ensure that no patient or family ever feels unseen, unheard, or uncared for.

Poppy's Promise is a five-stage framework that supports NHS staff to provide compassionate, consistent and patient-centred care. It aims to create a culture where empathy and communication are prioritised at every level – from education and recruitment to daily patient interactions.

At the heart of the initiative lies the C.A.R.E. framework, which outlines four guiding principles for staff to follow. The CARE principles form the foundation of Poppy's Promise. They describe the behaviours, attitudes and values that underpin every interaction – between staff and patients, staff and families, and colleagues with one another.

CARE is not an additional task. It is how care is delivered.

C.A.R.E. Meaning and Practice

Compassion - Demonstrate genuine kindness, empathy and humanity in every interaction. Compassion means recognising the emotional as well as the physical needs of patients, families and colleagues, and responding with care, patience and understanding. Small acts of compassion can have a lasting impact.

Acknowledge - Actively listen and be fully present. Use eye contact, names and open body language, and acknowledge the individual's feelings, concerns and lived experience. Every person should feel seen, heard and taken seriously.

Respect - Treat everyone with dignity, honesty and fairness at all times. Respect individual differences, personal circumstances and lived experience. Trust is built through respectful behaviour, consistency and integrity.

Empower - Enable people to be active participants in their care and work. Communicate clearly, encourage questions and shared decision-making, and ensure patients, families and colleagues feel informed, confident and included. Poppy's Promise is more than a framework - it represents a cultural shift towards human-centred care. By adopting these principles, we:

- Strengthen trust and communication between staff and patients
- Reduce avoidable harm through better understanding and listening
- Improve patient experience and staff wellbeing
- Foster a culture of openness, empathy and shared responsibility

Every member of staff has a role to play in bringing Poppy's Promise to life. Whether you are clinical, administrative or support staff, compassion and communication are part of everyone's role.

In daily practice, you can:

- Take a moment before entering a patient's space - centre yourself, focus on the person, not the task
- Use clear, respectful and kind language
- Listen without interruption and acknowledge emotions expressed
- Be honest and transparent, even when conversations are difficult
- Reflect after interactions - consider how your approach made the patient or family feel

All staff within the Trust are expected to:

- Uphold the values of Poppy's Promise in all patient and colleague interactions
- Attend any training, workshops or refreshers provided as part of the initiative
- Support colleagues in modelling compassionate behaviours
- Raise concerns constructively when communication or respect fall short
- Reflect these principles in both professional and personal conduct within the workplace

Together, we can make every interaction an opportunity to care, listen and make a difference.

That is Poppy's Promise.

Job Summary

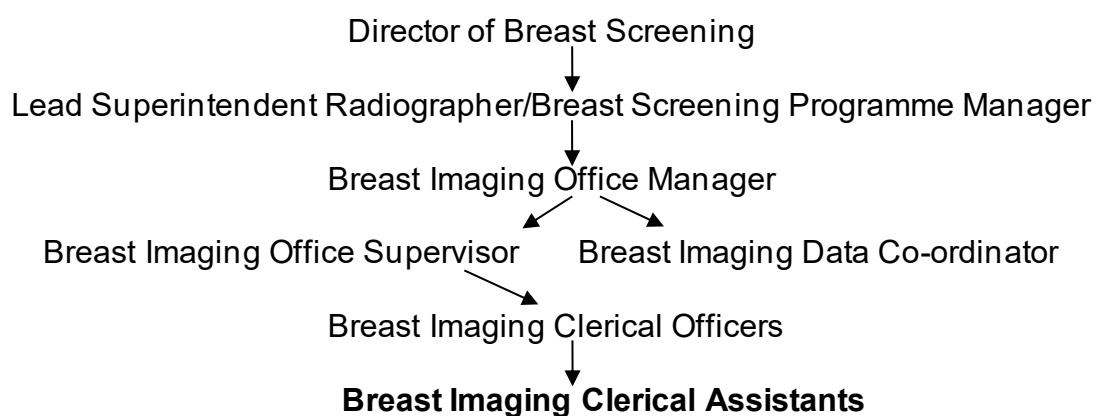
This summary has been generated using AI to provide a clear and accessible overview of the role. It is intended to support candidates who may find the full job description harder to read, such as those who are neurodiverse, have learning disabilities or lower literacy levels. Our goal is to make the application process more accessible and inclusive for everyone.

- The role supports the Breast Imaging team by helping with daily clerical tasks and keeping patient records up to date.
- You will welcome patients arriving for breast imaging and record their details on the computer systems.
- You will answer phone calls and help patients, families and staff by giving clear, friendly information.
- You will print letters and forms, manage post and request previous mammogram images from other hospitals.
- You will follow set rules and training to make sure work is done safely and correctly.
- You may sometimes need to travel to other hospital sites in Shropshire as part of the job.

Job Description

Job title:	Breast Imaging Clerical Assistant
Grade:	Band 2
Site:	The Princess Royal Hospital
Accountable to:	Lead Superintendent Radiographer
DBS required:	Yes, Standard DBS

Organisational Chart



Post purpose/Summary

To provide clerical support to the Breast Imaging Department in the provision of screening and symptomatic breast services, creating and amending breast imaging appointments and recording the screening/symptomatic pathway and clinical outcomes.

Receptionist responsible for greeting patients attending for Breast Imaging appointments and entering their attendance details on departmental IT systems (NBSS & CRIS).

The post is principally based at the Princess Royal Hospital, but the post-holder may be required to travel to other Trust sites within Shropshire.

Scope and Range

Working under the supervision of the Breast Imaging clerical team, duties are undertaken within the Breast Imaging department by following a daily list of tasks to be performed. The nature of the job will require the post-holder to be in regular contact with all members of the breast multi-disciplinary team and other screening units, hospitals and departments.

Main Duties and Responsibilities of the post holder

- To provide clerical support to the Breast Imaging clerical team and the wider clinical breast team.
- As Receptionist, to greet breast screening and symptomatic patients as they arrive and accurately record their attendance on NBSS/CRIS. To also record the attendance of any MRI patients that may arrive when sitting on reception as a gesture of good will.
- To deal with the full range of telephone calls into the Breast Imaging Office, including enquiries from health professionals, the general public and clients/patients.
- To manage incoming and outgoing post, prioritising work to ensure that urgent matters are dealt with in a timely manner.
- To undertake printing of letters, reports, clinic schedules and client forms.
- To request previous mammograms from other services/hospitals in a timely manner for both screening and symptomatic imaging.
- To comply with the policies of the National Breast Screening Programme relating to clerical matters.
- To comply with Trust and departmental policies and procedures and Health and Safety rules.
- To complete all mandatory training in accordance with Trust policy.

Communications and Relationships

- Effective communication skills are essential – verbal, written and e-mail.
- To liaise with a wide range of people on a regular basis - clerical and clinical colleagues, consultants, secretaries, histology, medical records, GPs and practice nurses, NHS Digital and Breast Screening Programme support teams, wards, clients/patients and their relatives/carers.
- To liaise with other breast screening services and hospitals regarding screening clients moving to/from other areas and the requesting and dispatch of their records.
- To provide general, non-clinical advice, information and guidance directly to patients/clients, relatives and carers, using acquired knowledge to inform clients of the benefits of mammography screening and breast awareness.
- Tact and diplomacy, patience and empathy are essential in the course of considerable patient/client telephone contact.

Systems and equipment

The post-holder will be required to use the following:

Equipment:

- Computer
- Printer
- Multi-function photocopier
- Telephone
- X-ray film viewers.

Systems:

- Trust & departmental operating systems – CareFlow, CRIS, NBSS, Microsoft Office and e-mail.

Decisions, judgements and freedom to act

- Organises own workload in line with responsibilities and timescales agreed with Breast Imaging clerical team.

Physical, Mental and Emotional demands of the post

- Inputting of essential information onto the computer database on a daily basis requires accuracy and concentration.
- Dexterity required in the use of a computer keyboard for much of the work.
- Ability to concentrate and produce accurate work while handling frequent interruptions.

- Emotionally demanding and distressing situations may arise when dealing with patients, clients and their relatives who are facing the possibility of a breast cancer diagnosis.

Working conditions

- Possible exposure to the emotional/aggressive behaviour of patients, clients or their relatives.
- Frequent and prolonged use of VDU.
- Job rotation and desk sharing on a daily/weekly basis.
- Potential for cross-site working at the Princess Royal Hospital, Telford – to be able to drive and to have the use of a vehicle.

Person Specification

	Essential	Desirable
Qualifications	<ul style="list-style-type: none"> • GCSEs of Grade 9 – 4 including Maths and English 	<ul style="list-style-type: none"> • Typing or IT qualifications
Experience	<ul style="list-style-type: none"> • Office Experience 	<ul style="list-style-type: none"> • Experience in a healthcare setting • Filing experience in large filing systems
Knowledge and skills	<ul style="list-style-type: none"> • Good verbal & written understanding of the English language • Working knowledge of Microsoft Office e.g. Word, Excel, E-mail • Understanding of confidentiality • Excellent communication skills with colleagues and patients • Competent PC user and keyboard skills • Proficient in use of Microsoft Office – Email, Word, Excel • Able to work in a multidisciplinary team • Able to work using own initiative 	<ul style="list-style-type: none"> • Experience of CareFlow and CRIS • Prior experience of hospital IT systems, e.g. NBSS, CareFlow, CRIS, Review, Clinical Portal

Other	<ul style="list-style-type: none"> • Able to sit for long periods at a desk/PC 	

General conditions

As they undertake their duties, all our people are required to uphold and demonstrate the Trust's core values of: Partnering, Ambitious, Caring and Trusted. Collaboration and partnership are also central to our approach in delivering our fundamental activities of patient care, teaching, and research.

Health & Safety

As an employee of the Trust you have a responsibility to:

- take reasonable care of your own Health and Safety and that of any other person who may be affected by your acts or omissions at work;
- co-operate with the Trust in ensuring that statutory regulations, codes of practice, local policies and departmental health and safety rules are adhered to;
- not intentionally or recklessly interfere with or misuse anything provided in the interests of health and safety.

Infection Prevention and Control

The prevention and management of acquired infection is a key priority for the Trust. Any breach of infection control policies is a serious matter which may result in disciplinary action. As an employee of the Trust you have a responsibility to:

- ensure that your work methods are compliant with the Trust's agreed policies and procedures and do not endanger other people or yourself;
- be aware of infection prevention and control policies, practices and guidelines appropriate for your duties and you must follow these at all times to maintain a safe environment for patients, visitors and staff;
- maintain an up to date knowledge of infection prevention and control, policies, practices and procedures through attendance at annual mandatory updates and ongoing continuing professional development;
- challenge poor infection prevention and control practices of others and to report any breaches, using appropriate Trust mechanisms (e.g. incident reporting policy).

Information Governance

The Trust is committed to compliance with Information Governance standards to ensure that all information is handled legally, securely, efficiently and effectively. You are required to comply with the Trust's Information Governance policies and standards. Failure to do so may result in action being taken in accordance with the Trust's Disciplinary Procedure.

- **Confidentiality and Security** - Your attention is drawn to the confidential and sensitive nature of information collected within the NHS. Whilst you are employed by the Trust you will come into contact with confidential information and data relating to the work of the Trust, its patients or employees. You are bound by your conditions of service to respect the confidentiality of any information you may come into contact with which identifies patients, employees or other Trust personnel, or business information of the Trust. You also have a duty to ensure that all confidential information is held securely at all times, both on and off site.
- **Disclosure of Information** - The unauthorised use or disclosure of information relating to the Trust's activities or affairs, the treatment of patients or the personal details of an employee, will normally be considered a serious disciplinary offence which could result in dismissal. Upon leaving the Trust's employment and at any time thereafter you must not take advantage of or disclose confidential information that you learnt in the course of your employment. Unauthorised disclosure of any of this information may be deemed as a criminal offence. If you are found to have permitted the unauthorised disclosure of any such information, you and the Trust may face legal action.

- **Information Quality and Records Management** - You must ensure that all information handled by you is accurate and kept up-to-date and you must comply with the Trust's recording, monitoring, validation and improvement schemes and processes.

Professional Standards and Performance Review

As an employee of the Trust you have a responsibility to:

- participate in statutory and mandatory training as appropriate for the post; and
- maintain consistently high personal and professional standards and act in accordance with the relevant professional code of conduct;
- take responsibility for the maintenance and improvement of personal and professional competence and to encourage that of colleagues and subordinates;
- participate in the Trust's appraisal processes including identifying performance standards for the post, personal objective setting and the creation of a personal development plan in line with the KSF outline for the post.

Safeguarding Children and Vulnerable Adults

We all have a personal and a professional responsibility within the Trust to identify and report abuse. This may be known, suspected, witnessed or have raised concerns. Early recognition is vital to ensuring the patient is safeguarded; other people (children and vulnerable adults) may be at risk. The Trust's procedures must be implemented, working in partnership with the relevant authorities. The Sharing of Information no matter how small is of prime importance in safeguarding children, young people and vulnerable adults.

- As an employee of the Trust you have a responsibility to ensure that:
 - you are familiar with and adhere to the Trusts Safeguarding Children procedures and guidelines.
 - you attend safeguarding awareness training and undertake any additional training in relation to safeguarding relevant to your role.

NHS Sexual Safety Charter

The Trust is committed to ensuring that all employees work in an environment that is safe, inclusive, and free from sexual misconduct, harassment, and discrimination. As a signatory to the NHS Sexual Safety Charter, the Trust upholds a zero-tolerance approach to sexual harassment and supports anyone affected by inappropriate behaviour. In accordance with the Workers Protection (Amendment of Equality Act 2010) Act 2023, the Trust has a statutory duty to take reasonable steps to prevent sexual harassment of its employees. All staff, are required to treat others with dignity

and respect at all times and to cooperate with Trust policies, procedures and training designed to maintain a culture of safety, professionalism, and mutual respect.

Social Responsibility

The Trust is committed to behaving responsibly in the way we manage transport, procurement, our facilities, employment, skills and our engagement with the local community so that we can make a positive contribution to society. As an employee of the Trust you have a responsibility to take measures to support our contribution and to reduce the environmental impact of our activities relating to energy and water usage, transport and waste.

Continuous Improvement

The Shrewsbury and Telford Hospital NHS Trust aims to empower colleagues at all levels have the confidence, capability, passion, and knowledge, to test changes and make improvements at SaTH and in the communities we serve.

To support this, we have developed the SaTH Improvement Method, a structured approach to change that provides practical tools and techniques to help you understand what success looks like with clear aims, enables you to measure progress and plan meaningful improvements.

You won't be doing this alone. Whether you're new to improvement or already leading change, the Improvement Hub is here to guide you with expert advice, hands-on support, and a wide range of training opportunities to help you grow and thrive throughout your time at SaTH whilst making improvements in your area of work. Join us in shaping a culture of continuous improvement, where every colleague is supported to make a difference.

Equal opportunities and diversity

The Shrewsbury and Telford Hospital NHS Trust is an Equal Opportunities Employer, fully committed to fostering an inclusive workplace where all staff feel valued and able to thrive. We believe that a diverse workforce, reflective of our community, is essential for delivering the best patient care.

We will not discriminate against any job applicant or colleague based on any protected characteristic, including age, disability, gender reassignment, marriage and civil partnership, pregnancy and maternity, race (including colour, nationality, ethnic or national origin), religion or belief, sex, or sexual orientation. Selection for appointment, training, development, and promotion will be based purely on merit and the individual's ability to meet the role requirements.

As a post-holder, you have a personal responsibility to uphold the Trust's commitment to equality by treating all colleagues and patients with respect and

dignity. You must actively support measures introduced to ensure equality of opportunity and will not discriminate, harass, or bully others, or condone such behaviour.

