

Colleague Benefits

General

- 27 days annual leave entitlement, increasing with length of service, plus 8 bank holidays
- Flexible working policies
- Generous maternity pay and 2 weeks full pay paternity leave
- Colleague recognition scheme and long service awards
- Greener travel initiative, including cycle to work scheme and lift share
- Childcare information and support available, including onsite nurseries
- Discounted bus passes with Arriva

Financial

- Access to various local and national discounts via various external websites
- Salary sacrifice schemes
- Generous pension scheme
- Access to a financial support booklet
- Pre-retirement courses
- Free Will writing service
- Savings and Loan schemes

Learning and Development

- Coaching and Mentoring
- Leadership Academy – leadership and management training for all staff
- Access to E-Learning courses
- Apprenticeships – growing number of apprenticeship opportunities across all disciplines
- Secondment and acting up opportunities
- Support to complete qualifications whilst on the job

Wellbeing

- Coaching
- Mental Health First Aiders
- Chaplaincy
- Fast track physiotherapy service
- Free eye test vouchers
- Slimming World referral scheme
- Cervical screening service
- Long Covid support
- Access to wellbeing/rest rooms
- Menopause support
- Men's Health forms and MOT
- Discounts with local gyms

Poppy's Promise

Poppy's Promise is a compassionate care initiative introduced within this Trust to enhance communication, respect and empathy across every aspect of patient care.

The initiative was founded by Katie Russell, following the loss of her daughter Poppy, who tragically died at just twelve hours old due to failures in care and communication. Born from that experience, Poppy's Promise serves as a powerful reminder that while clinical skill saves lives, it is compassion, listening and respect that define the quality of care and human connection. By embedding this promise across our organisation, we ensure that no patient or family ever feels unseen, unheard, or uncared for.

Poppy's Promise is a five-stage framework that supports NHS staff to provide compassionate, consistent and patient-centred care. It aims to create a culture where empathy and communication are prioritised at every level - from education and recruitment to daily patient interactions.

At the heart of the initiative lies the C.A.R.E. framework, which outlines four guiding principles for staff to follow. The CARE principles form the foundation of Poppy's Promise. They describe the behaviours, attitudes and values that underpin every interaction — between staff and patients, staff and families, and colleagues with one another.

CARE is not an additional task. It is how care is delivered.

C.A.R.E. Meaning and Practice

Compassion - Demonstrate genuine kindness, empathy and humanity in every interaction.

Compassion means recognising the emotional as well as the physical needs of patients, families and colleagues, and responding with care, patience and understanding. Small acts of compassion can have a lasting impact.

Acknowledge - Actively listen and be fully present.

Use eye contact, names and open body language, and acknowledge the individual's feelings, concerns and lived experience. Every person should feel seen, heard and taken seriously.

Respect - Treat everyone with dignity, honesty and fairness at all times.

Respect individual differences, personal circumstances and lived experience. Trust is built through respectful behaviour, consistency and integrity.

Empower - Enable people to be active participants in their care and work.

Communicate clearly, encourage questions and shared decision-making, and ensure patients, families and colleagues feel informed, confident and included.

Poppy's Promise is more than a framework - it represents a cultural shift towards human-centred care. By adopting these principles, we:

- Strengthen trust and communication between staff and patients
- Reduce avoidable harm through better understanding and listening
- Improve patient experience and staff wellbeing
- Foster a culture of openness, empathy and shared responsibility

Every member of staff has a role to play in bringing Poppy's Promise to life. Whether you are clinical, administrative or support staff, compassion and communication are part of everyone's role.

In daily practice, you can:

- Take a moment before entering a patient's space - centre yourself, focus on the person, not the task
- Use clear, respectful and kind language
- Listen without interruption and acknowledge emotions expressed
- Be honest and transparent, even when conversations are difficult
- Reflect after interactions - consider how your approach made the patient or family feel

All staff within the Trust are expected to:

- Uphold the values of Poppy's Promise in all patient and colleague interactions
- Attend any training, workshops or refreshers provided as part of the initiative
- Support colleagues in modelling compassionate behaviours
- Raise concerns constructively when communication or respect fall short
- Reflect these principles in both professional and personal conduct within the workplace

Together, we can make every interaction an opportunity to care, listen and make a difference.

That is Poppy's Promise.

Job Summary

This summary has been generated using AI to provide a clear and accessible overview of the role. It is intended to support candidates who may find the full job description harder to read, such as those who are neurodiverse, have learning disabilities or lower literacy levels. Our goal is to make the application process more accessible and inclusive for everyone

- The role helps to improve outpatient services by supporting projects that make patient pathways work better.
- It involves looking at data to find problems, understand patterns, and help teams make good decisions.
- The postholder works with many different teams to plan changes, test new ideas, and make sure they are put into practice.
- They help create clear processes, support digital changes, and make sure new ways of working are followed.
- The role includes sharing information in a simple way, keeping track of risks, and helping improve patient access and service quality.
- It also supports training, good use of resources, and safe working practices across the service.

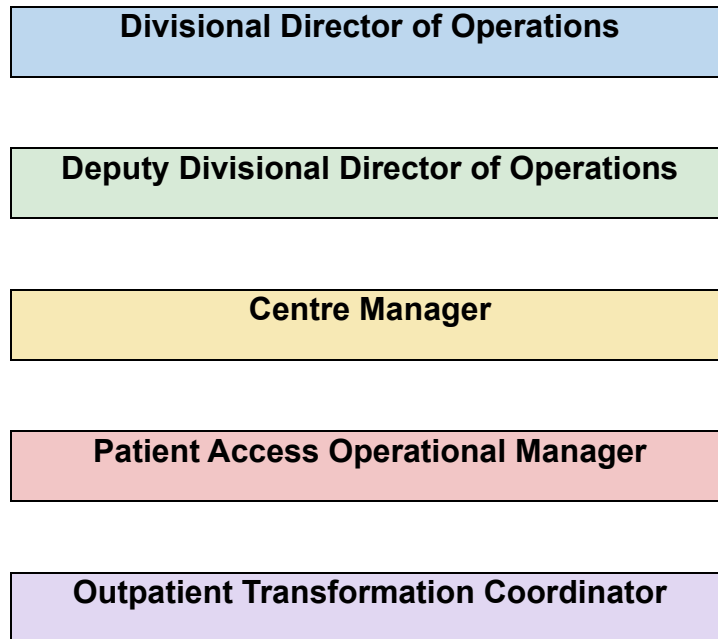
Job Description

Job title:	Patient Access Performance and Improvement Officer
Grade:	Band 6 (subject to A4C)
Site:	The Royal Shrewsbury Hospital
Accountable to:	Centre Manager
DBS required:	No

Job Purpose

The postholder will support development, implementation and monitoring of outpatient transformation initiatives, lead data analysis, provide reporting, coordinate improvement activity and work across teams to deliver patient-centred outpatient pathways

Organisation Chart



Main Duties and Responsibilities

Transformation Programme Support

- Support outpatient transformation workstreams by coordinating actions, ensuring milestones are met, and maintaining alignment with Trust priorities.
- Coordinate improvement activity by gathering feedback, analysing pathway gaps, and facilitating redesign workshops.
- Standardise and optimise clinic templates by reviewing utilisation data, engaging with clinicians, and implementing consistent scheduling rules.
- Assist implementing digital automation processes by liaising with Digital Services, testing new workflows, training staff, and monitoring benefits.

Data Analysis & Reporting

- Produce quantitative and qualitative analysis by extracting data, validating accuracy, and interpreting trends to guide decision-making.
- Extract and interpret data related to capacity, demand, utilisation, DNAs, and cancellations to identify bottlenecks and performance gaps.
- Develop dashboards and reports tailored for Centre Managers, Divisional leadership and clinical teams to support oversight and operational planning.
- Identify inefficiencies and opportunities by comparing current performance with benchmarks, modelling scenarios, and recommending service changes.

Operational Support to Redesign

- Support testing and embedding redesigned pathways by conducting pilot exercises, documenting learning, and adjusting workflows.
- Support SOP development by drafting processes, consulting stakeholders, and ensuring procedures reflect safe and efficient practices.
- Monitor compliance with redesigned processes and escalate recurrent issues to the Centre Manager for resolution.
- Support system changes by coordinating configuration updates, communicating modifications, and providing frontline support during transition periods.

Stakeholder Engagement & Communication

- Act as link between teams by maintaining effective communication across Patient Access, clinical specialties, BI, PMO and Digital Services.
- Coordinate meetings and actions by preparing agendas, capturing outcomes, tracking progress and ensuring timely delivery of tasks.
- Communicate data findings clearly through visual summaries, presentations, written reports and discussion forums.

Quality, Governance & Compliance

- Support governance processes by preparing evidence-based updates, ensuring actions are logged and progress monitored.
- Contribute to risk and benefit tracking by recording emerging risks, analysing their impact and supporting mitigation strategies.
- Ensure improvements in patient access by routinely reviewing pathway performance, identifying delays, and supporting corrective actions.

Governance and Risk

- Support governance processes by monitoring risks, contributing to the corporate risk register, and ensuring mitigation actions are followed through.
- Escalate significant risks promptly to senior management and ensure compliance with Trust policies and statutory requirements.

Quality and Service Improvement

- Analyse trends and benchmark data to inform quality improvements and operational changes.
- Participate in audits, surveys and service reviews to ensure patient-centred continuous improvement.

Workforce

- Support training, induction and development activities within Patient Access and associated teams.
- Promote a culture of learning, continuous improvement and staff engagement.

Finance

- Support efficient use of resources, identifying opportunities for cost-effective service delivery.
- Provide data insights that support financial planning and cost improvement programmes.

Person Specification

	Essential	Desirable
Qualifications	<ul style="list-style-type: none"> • Degree level education or equivalent professional qualification or experience • Evidence of a commitment to continuous professional development 	
Experience	<ul style="list-style-type: none"> • Experience of managing information systems • Evidence of monitoring projects • Evidence of effective people management 	
Knowledge and skills	<ul style="list-style-type: none"> • Excellent numerical skills • Excellent Organisational Skills • Ability to liaise effectively • Advanced IT skills • Ability to manipulate data • Comprehensive knowledge of current best practice and health policy requirements • Specialist knowledge in NHS • Ability to manage a range of staff groups to deliver 	

	<p>objectives and targets</p> <ul style="list-style-type: none"> • Ability to monitor a budget • Ability to monitor complex change projects • Ability to analyse complex and sometimes conflicting information to resolve issues • Knowledge of quality improvement tools and methodology 	
Other	<ul style="list-style-type: none"> • Ability to travel across the health community as required 	

General conditions

As they undertake their duties, all our people are required to uphold and demonstrate the Trust's core values of: Partnering, Ambitious, Caring and Trusted. Collaboration and partnership are also central to our approach in delivering our fundamental activities of patient care, teaching, and research.

Health & Safety

As an employee of the Trust you have a responsibility to:

- take reasonable care of your own Health and Safety and that of any other person who may be affected by your acts or omissions at work;
- co-operate with the Trust in ensuring that statutory regulations, codes of practice, local policies and departmental health and safety rules are adhered to;
- not intentionally or recklessly interfere with or misuse anything provided in the interests of health and safety.

Infection Prevention and Control

The prevention and management of acquired infection is a key priority for the Trust. Any breach of infection control policies is a serious matter which may result in disciplinary action. As an employee of the Trust you have a responsibility to:

- ensure that your work methods are compliant with the Trust's agreed policies and procedures and do not endanger other people or yourself;
- be aware of infection prevention and control policies, practices and guidelines appropriate for your duties and you must follow these at all times to maintain a safe environment for patients, visitors and staff;
- maintain an up to date knowledge of infection prevention and control, policies, practices and procedures through attendance at annual mandatory updates and ongoing continuing professional development;
- challenge poor infection prevention and control practices of others and to report any breaches, using appropriate Trust mechanisms (e.g. incident reporting policy).

Information Governance

The Trust is committed to compliance with Information Governance standards to ensure that all information is handled legally, securely, efficiently and effectively. You are required to comply with the Trust's Information Governance policies and standards. Failure to do so may result in action being taken in accordance with the Trust's Disciplinary Procedure.

- **Confidentiality and Security** - Your attention is drawn to the confidential and sensitive nature of information collected within the NHS. Whilst you are employed by the Trust you will come into contact with confidential information and data relating to the work of the Trust, its patients or employees. You are bound by your conditions of service to respect the confidentiality of any information you may come into contact with which identifies patients, employees or other Trust personnel, or business information of the Trust. You also have a duty to ensure that all confidential information is held securely at all times, both on and off site.
- **Disclosure of Information** - The unauthorised use or disclosure of information relating to the Trust's activities or affairs, the treatment of patients or the personal details of an employee, will normally be considered a serious disciplinary offence which could result in dismissal. Upon leaving the Trust's employment and at any time thereafter you must not take advantage of or disclose confidential information that you learnt in the course of your employment. Unauthorised disclosure of any of this information may be deemed as a criminal offence. If you are found to have permitted the unauthorised disclosure of any such information, you and the Trust may face legal action.

- **Information Quality and Records Management** - You must ensure that all information handled by you is accurate and kept up-to-date and you must comply with the Trust's recording, monitoring, validation and improvement schemes and processes.

Professional Standards and Performance Review

As an employee of the Trust you have a responsibility to:

- participate in statutory and mandatory training as appropriate for the post; and
- maintain consistently high personal and professional standards and act in accordance with the relevant professional code of conduct;
- take responsibility for the maintenance and improvement of personal and professional competence and to encourage that of colleagues and subordinates;
- participate in the Trust's appraisal processes including identifying performance standards for the post, personal objective setting and the creation of a personal development plan in line with the KSF outline for the post.

Safeguarding Children and Vulnerable Adults

We all have a personal and a professional responsibility within the Trust to identify and report abuse. This may be known, suspected, witnessed or have raised concerns. Early recognition is vital to ensuring the patient is safeguarded; other people (children and vulnerable adults) may be at risk. The Trust's procedures must be implemented, working in partnership with the relevant authorities. The Sharing of Information no matter how small is of prime importance in safeguarding children, young people and vulnerable adults.

- As an employee of the Trust you have a responsibility to ensure that:
 - you are familiar with and adhere to the Trusts Safeguarding Children procedures and guidelines.
 - you attend safeguarding awareness training and undertake any additional training in relation to safeguarding relevant to your role.

NHS Sexual Safety Charter

The Trust is committed to ensuring that all employees work in an environment that is safe, inclusive, and free from sexual misconduct, harassment, and discrimination. As a signatory to the NHS Sexual Safety Charter, the Trust upholds a zero-tolerance approach to sexual harassment and supports anyone affected by inappropriate behaviour. In accordance with the Workers Protection (Amendment of Equality Act 2010) Act 2023, the Trust has a statutory duty to take reasonable steps to prevent sexual harassment of its employees. All staff, are required to treat others with dignity

and respect at all times and to cooperate with Trust policies, procedures and training designed to maintain a culture of safety, professionalism, and mutual respect.

Social Responsibility

The Trust is committed to behaving responsibly in the way we manage transport, procurement, our facilities, employment, skills and our engagement with the local community so that we can make a positive contribution to society. As an employee of the Trust you have a responsibility to take measures to support our contribution and to reduce the environmental impact of our activities relating to energy and water usage, transport and waste.

Continuous Improvement

The Shrewsbury and Telford Hospital NHS Trust aims to empower colleagues at all levels have the confidence, capability, passion, and knowledge, to test changes and make improvements at SaTH and in the communities we serve.

To support this, we have developed the SaTH Improvement Method, a structured approach to change that provides practical tools and techniques to help you understand what success looks like with clear aims, enables you to measure progress and plan meaningful improvements.

You won't be doing this alone. Whether you're new to improvement or already leading change, the Improvement Hub is here to guide you with expert advice, hands-on support, and a wide range of training opportunities to help you grow and thrive throughout your time at SaTH whilst making improvements in your area of work. Join us in shaping a culture of continuous improvement, where every colleague is supported to make a difference.

Equal opportunities and diversity

The Shrewsbury and Telford Hospital NHS Trust is an Equal Opportunities Employer, fully committed to fostering an inclusive workplace where all staff feel valued and able to thrive. We believe that a diverse workforce, reflective of our community, is essential for delivering the best patient care.

We will not discriminate against any job applicant or colleague based on any protected characteristic, including age, disability, gender reassignment, marriage and civil partnership, pregnancy and maternity, race (including colour, nationality, ethnic or national origin), religion or belief, sex, or sexual orientation. Selection for appointment, training, development, and promotion will be based purely on merit and the individual's ability to meet the role requirements.

As a post-holder, you have a personal responsibility to uphold the Trust's commitment to equality by treating all colleagues and patients with respect and dignity. You must actively support measures introduced to ensure equality of opportunity and will not discriminate, harass, or bully others, or condone such behaviour.

